

# LEAPing Life Cycles

## Metamorphosis

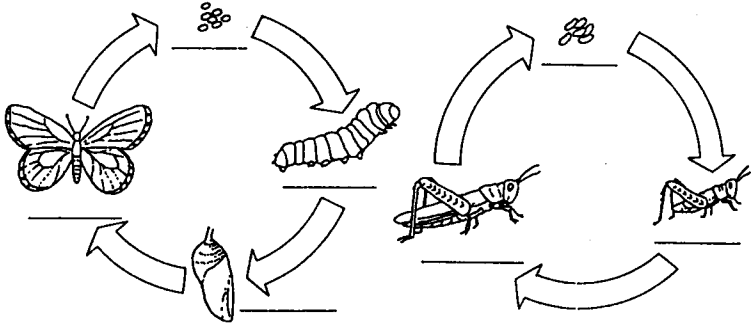
As insects develop they undergo metamorphosis, a series of definite changes in appearance. Some insects, such as a butterfly, undergo complete metamorphosis. Other insects, such as the grasshopper, undergo incomplete metamorphosis.

Label the four stages on the diagram of the complete metamorphosis of the butterfly at the left below.

Label the three stages on the diagram of the incomplete metamorphosis of the grasshopper at the right below.

Complete Metamorphosis

Incomplete Metamorphosis



Fill in the blanks with the correct answers.

In complete metamorphosis, a female butterfly hatches into a wormlike organism called a \_\_\_\_\_ or caterpillar. During this stage, the organism consumes a large amount of food. The \_\_\_\_\_ or caterpillar then spins a protective covering around itself and becomes a \_\_\_\_\_ or chrysalis. This covering is called a \_\_\_\_\_. While inside this covering, the \_\_\_\_\_ changes into an \_\_\_\_\_.

In \_\_\_\_\_ metamorphosis, a grasshopper goes through a \_\_\_\_\_ change from egg to \_\_\_\_\_. The grasshopper begins as an \_\_\_\_\_ and hatches into a \_\_\_\_\_. A nymph is an immature \_\_\_\_\_ that resembles a full-grown grasshopper but lacks \_\_\_\_\_. As the nymph grows, it \_\_\_\_\_ until it reaches the last stage.

