

Discipline Frequency Reports and Graphs

NO	RUN	HELP	PROGRAM NAME	LAST RUN	USER	VER	PROGRAM DESCRIPTION
01		HELP	DISCIPLINE OVERVIEW	06/04/2005 09:20:35	TSENECA	1003021510	Current Program: Contains all discipline programs
02	RUN	HELP	Posting and Reports	11/29/2001 12:44:54	GEG	1.01126	Discipline Referral System
03	RUN	HELP	Discipline Grid	09/29/03 15:26:54	KLS	07.01.03	Discipline Display Grid System
04	RUN	HELP	Discipline Utility	01/03/02 15:26:54	GEG	01.03.02	Discipline Utility
05	RUN	HELP	Detention List	01/03/02 00:00:00	RM	09.26.02.1	Detention List
06	RUN	HELP	Discipline Report Teacher/Gra...	06/04/2005 09:03:39	KS	12.21.02	Discipline Report by Teacher/Grade
07	RUN	HELP	Suspension/Expulsion List	06/04/2005 08:42:53	KLS	01.22.03.1	ISS/OSS List
08	RUN	HELP	Discipline Referral List	06/04/2005 09:03:01	KLS	03.13.03	Discipline Referral List
09	RUN	HELP	Student Statistic Review	06/04/2005 09:03:16	KLS	05.01.03	Discipline/Attendance/GPA Report
10	RUN	HELP	Frequency Report	05/01/03 00:00:00	KLS	05.01.03	Frequency Report
11	RUN	HELP	Point System	07/16/03 00:00:00	KLS		Point System
12	RUN	HELP	Discipline Ethnic/Gender/Grade	06/04/2005 09:02:23	KLS		Discipline Ethnic/Gender/Grade
13	RUN	HELP	Incident & Action Taken Matrix	06/04/2005 09:17:07	KLS		Discipline
14	RUN	HELP	Incident & Action Matrix 2	06/04/2005 09:20:37	KLS		Discipline
15	RUN	HELP	Referral Number Audit	06/04/2005 09:04:37	KLS		diRealignment
16	RUN	HELP	Students Without Referrals	06/04/2005 09:04:30	KLS		Students Without Referrals
17	RUN	HELP	Discipline Summary Report	06/04/2005 09:04:14	KLS		diFullReport
18	RUN	HELP	Referral Export to File	06/28/2004 10:00:00	SWS		Referral Export to File
19	RUN	HELP	Discipline Hot List	06/04/2005 09:03:49	VA		Discipline Hot Code List
20	RUN	HELP	Discipline Audit	03/23/2005 15:30:00	VA		Discipline Audit

To Post Discipline:

Click on the pink Run button next to
10 Frequency Report

The screenshot shows a software interface with a table of incident codes and two pop-up windows. A yellow starburst graphic with the text "Complete Setup" is overlaid on the right side.

Code	Incident Codes	# Ref	# Stu	Avg	% Stu

FAQ Box

THIS PROGRAM ALLOWS YOU TO VIEW REFERRAL COUNTS, STUDENT COUNTS, FREQUENCY PERCENTAGE, STUDENT BODY PERCENTAGE BROKEN DOWN BY INCIDENT, ACTION, LOCATION, TIME OR MONTH.

IF YOU CLICK ON THE DESCRIPTION COLUMN IT WILL BREAK DOWN THE INDIVIDUAL DESCRIPTION BY RACE.

IF YOU CLICK ON REFERRAL OR ON THE STUDENT COLUMN IT WILL GIVE YOU A LIST OF STUDENTS

Setup Box

SCHOOL YEAR: 0405

DISTRICT: 061 TO: 061

SCHOOL: 005 TO: 005

INCLUDE GRADES: -1 TO: 12

DATE RANGE: 2004-08-16 TO: 2005/06/06

SHOW: ACTIONS INCIDENTS DAY

TIME LOCATIONS MONTH STAFF

SHOW: ALL NON-SPED SPED

JSPED INSTALLED

Ok Cancel

Setup Box

SCHOOL YEAR: 0405

DISTRICT: 061 TO: 061

SCHOOL: 005 TO: 005

INCLUDE GRADES: -1 TO: 12

DATE RANGE: 2004-08-16 TO: 2005/06/06

SHOW: ACTIONS INCIDENTS DAY
 TIME LOCATIONS MONTH STAFF

SHOW: ALL NON-SPED SPED

JSPED INSTALLED

Ok Cancel

Reports and Graphs can be generated by

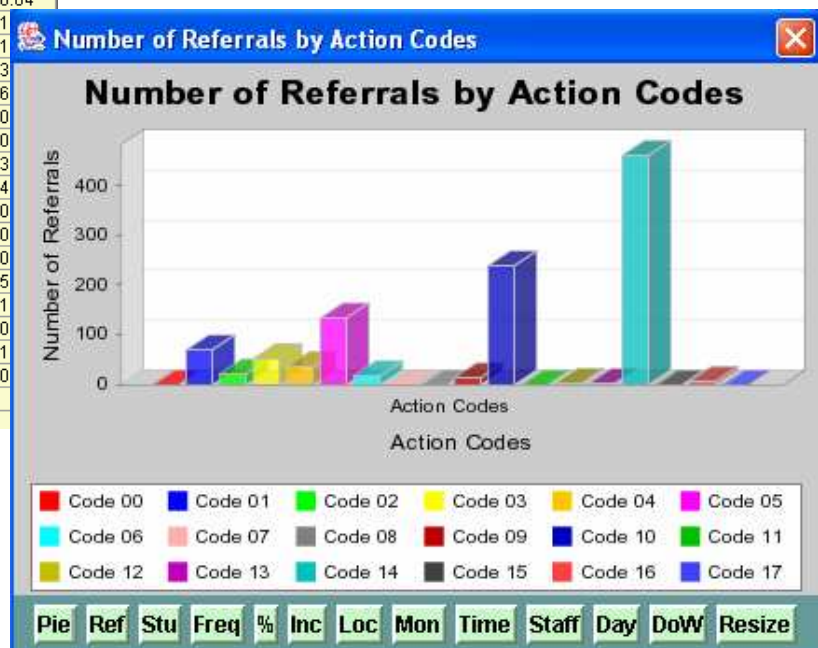
- Actions
- Incidents
- Day (DOW)
- Time
- Locations
- Month
- Staff Member

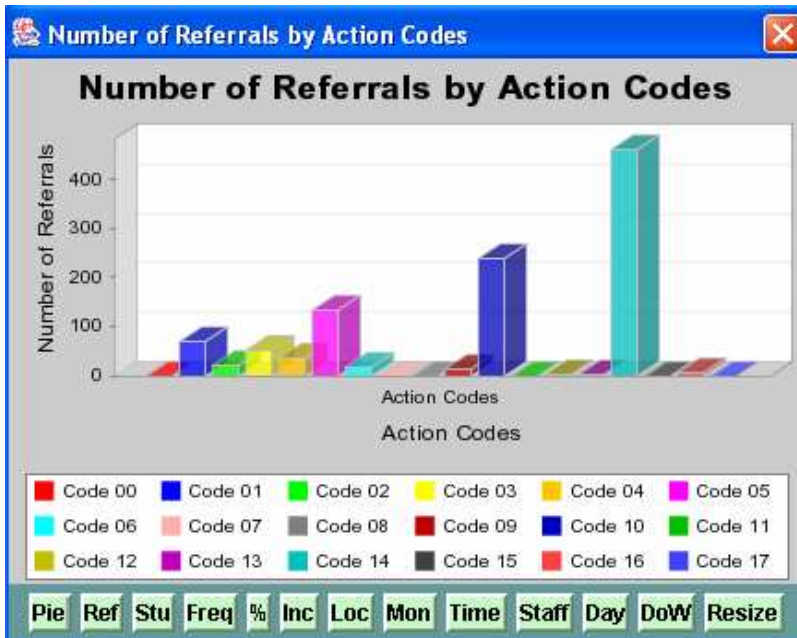
It is also possible to run reports for all students, regular education (NON-SPED), and special education students (SPED).

Sample of each Report and Graph follows:

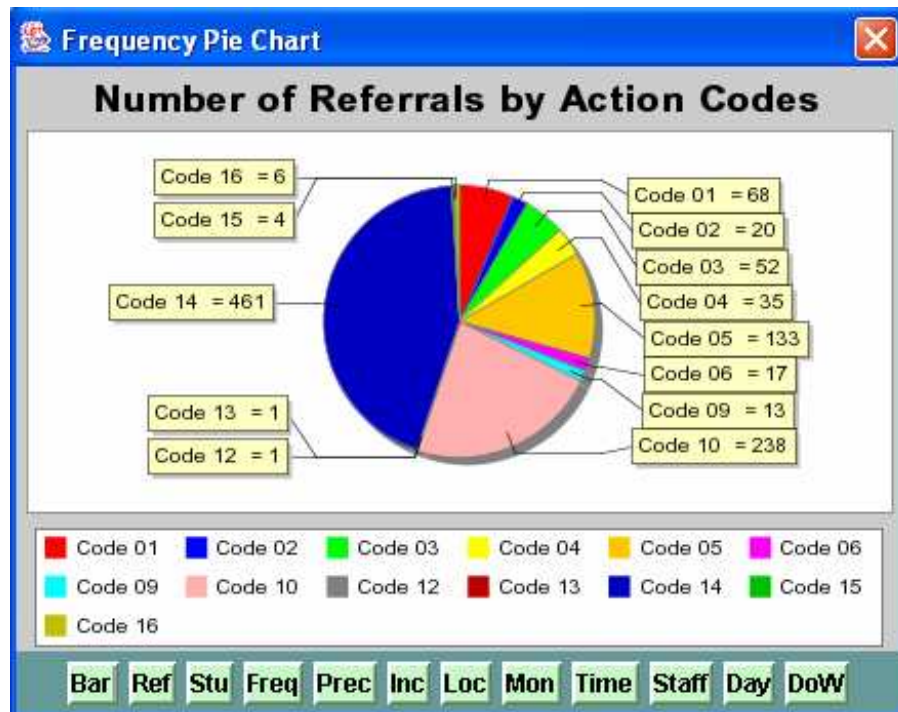
Code	Action Taken	# Ref	# Stu	Avg	% Stu
00	Other	0	0	0.0	0.0
01	Held Conference with Student	68	50	1.36	19.5
02	Contacted Parent/Guardian	20	17	1.17	6.64
03	Assigned to Detention	52	40	1.3	1
04	Assigned Remedial Work	35	27	1.29	1
05	Student Reprimanded	133	97	1.37	3
06	Held Conference w/Parent/	17	16	1.06	6
07	Referred to Counselor	0	0	0.0	0
08	Assigned Recess Detention	0	0	0.0	0
09	Out of school suspension	13	10	1.3	3
10	ISS On Site	238	105	2.26	4
11	ISS Discipline Center	0	0	0.0	0
12	Corporal Punishment	1	1	1.0	0
13	N/A	1	1	1.0	0
14	SAC - time out-detention	461	145	3.17	5
15	Out of School Expulsion	4	4	1.0	1
15	In School Expulsion	0	0	0.0	0
16	Alternate Placement	6	5	1.2	1
17	Assigned to Dormitory Detention	0	0	0.0	0
	Total Student Body	256			

By Action Codes:





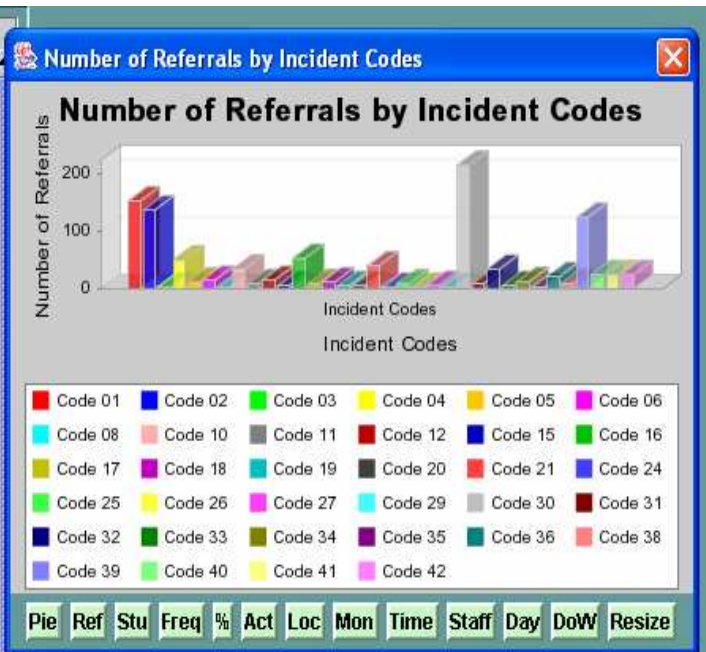
Click on the Pie button to change the graph to a pie chart (see below).



Use the buttons at the bottom of the graphs to move among the different types of reports.

By Incident Code:

Code	Incident Codes	# Ref	# Stu	Avg	% Stu
01	Willful disobedience	152	73	2.08	28.5
02	Treats an authority with disrespect	136	74	1.83	28.9
03	Makes an unfounded charge ag...	1	1	1.0	0.39
04	Uses profane and/or obscene la...	50	41	1.21	16.0
05	Is guilty of immoral or vicious pr...	10	8	1.25	3.125
06	Conduct or habits injurious to ot...	13	12	1.08	4.68
08	Uses/possesses tobacco and/o...	3	3	1.0	1.17
10	Disturbs the school/violates rules	34	25	1.36	9.76
11	Cuts defaces injures school/van...	8	8	1.0	3.125
12	Writes or draws obscene/profan...	13	11	1.18	4.29
15	Throws missiles liable to injure ...	4	4	1.0	1.56
16	Instigates or participates in fights	52	46	1.13	17.9
17	Violates traffic and safety regulat...	9	9	1.0	3.51
18	Leaves school or classroom w/o...	10	9	1.11	3.51
19	Is tardy and/or absent	5	3	1.66	1.17
20	Is guilty of stealing	4	4	1.0	1.56
21	Commits any other serious offe...	38	29	1.31	11.3
24	Defacing Bus or Destroying Pro...	2	2	1.0	0.78
25	Eating/Drinking/Littering	7	6	1.16	2.34
26	Skipping School	1	1	1.0	0.39
27	Threatening Students/Faculty	5	5	1.0	1.95
29	Possession/Shooting Fireworks	2	2	1.0	0.78
30	Disturbance in Classroom/Cam...	214	105	2.03	41.0
31	Habitual Violations of School/CI...	8	7	1.14	2.73
32	Dress Code Violation	33	23	1.43	8.98
33	Failure to attend detention or in...	5	5	1.0	1.95
34	Inappropriate Objects	12	12	1.0	4.68
35	Refusing to sit in assigned seat	2	2	1.0	0.78



Use the buttons at the bottom of the graphs to move among the different types of reports.